

# The Swiss driving experience.



## GRÜEZI

At Stromer, we are committed to creating premium e-bikes, because we believe that commuting with a Stromer is sheer pleasure. We are convinced that it's the best feeling to pass by sports cars stuck in a traffic jam on your powerful, agile, and elegant e-bike. We build innovative e-bikes that will reclaim many hours otherwise spent in traffic. But a Stromer is more than just a car substitute: it gives you an exciting, exhilarating ride. Discover Stromer and the "Swiss driving experience".

From the very beginning, our goal was to unite clean design and quality for discerning customers. Stromer e-bikes offer intuitive usability and can be tailored to your individual needs. Back in 2009 we caused a stir with the first fully integrated e-bike system. Five years later we set new standards with the first digitally connected e-bike. On top of that, we have not only made headway in terms of range, but are also on the fast track with the new ST1 X. The bold new orange color we introduced as a contrasting design element suits the stylish ST1 X exceptionally well.

Don't take our word for it. Experience for yourself how Swiss values and quality standards are combined to create a reliable, powerful product.

Become a part of the mobility revolution – and switch to a Stromer.

Have a great ride!  
Your Stromer team

# STROMER CONCEPT

For us, an e-bike is a synergy of technology and design that ultimately results in the creation of a perfect whole. All these qualities combined make Stromer quite simply one of a kind: innovative technology, clever design, and individual adaptability are the principles we follow to ensure that you have an unforgettable driving experience.

The combination of all these qualities is what makes Stromer e-bikes so unique.

## DRIVE SYSTEM

**POWERFUL** – We have always attached great value to motors that can accelerate quickly and quietly.

**EFFICIENT** – Regenerative braking feeds the energy straight back into the battery.

**INDIVIDUAL** – The digital Stromer interface allows you to change the motor power settings at any time. Choose the ride characteristics and pedal assist modes best suited to your specific commute, depending on whether your route is flat or hilly.

**DYNAMIC** – The precise sensor system is what gives you that inimitable Stromer feeling. And the finely calibrated algorithm reacts instantly to your impulses and allows you to drive off with ease after stopping at a red light.

## VEHICLE

**MODULAR** – Because your e-bike should be perfectly suited to you, each Stromer can be individually configured and adjusted.

**COMFORTABLE** – Gently roll to work on the Stromer's balloon tires. The well-balanced geometry and high-quality materials ensure optimal shock absorption and get you to your destination with fewer bumps and jolts.

**SAFE** – If you're planning a speedier ride, you can rely on your e-bike's stable frame concept. The hydraulic disc brakes ensure a controlled slow-down on the street.

**PRACTICAL** – The lithium-ion battery is out of sight and fully integrated into the down tube. And replacing it couldn't be easier.



## **BATTERY**

**RANGE** – If you want to drive long distances, you will appreciate the luxury of the powerful battery. Thanks to its range of up to 110 mi, you won't need to worry about recharging it for several days.

**OPTIONS** – Multiple battery options allow you to choose the battery that best suits your needs.

**CHARGING** – Whether you want to recharge your battery directly in your bike or at home – both options are possible. The battery is easy to replace and can be recharged on the bike via an external charging socket or at any conventional power socket using the charger provided.



GSM



GPS



Omni is Stromer's cloud-based platform, which offers you security and a configuration service for your e-bike. The Stromer app works on your iOS or Android smartphone. Omni allows you to fine-tune your motor, save the number of miles you've already driven, and check your service status. Just get out your smartphone and select the best settings for your needs.

## ANTI-THEFT PROTECTION

One of the standout features is the fully integrated anti-theft protection. This allows you to lock and unlock your e-bike anytime and anywhere. As soon as someone tries to move your locked e-bike, the motor is disabled, lights start flashing, and you receive a text message informing you of the incident. On top of that, you can track the whereabouts of your bike with the help of the integrated GPS system.



## ALWAYS UP TO DATE

One of the unique features of Stromer e-bikes is the automatic software update. This ensures that your e-bike and smartphone software is always current. Because the Stromer portal is accessible to dealers, you can be assured of the best possible support for your e-bike's maintenance. Service entries and maintenance plans give dealers a complete picture of your e-bike, so that they can configure it according to your needs.



**ST2**





## THE COMMUNICATIONS SPECIALIST

You glide past the gridlocked cars and are first in line at the traffic lights. You no longer have to endure an exhausting wait in traffic before your leisure time begins, and can instead start relaxing the very moment you leave the office. You mount your bike easily and leave the congested traffic behind you. Commute in style with the ST2 line.

Your unique Stromer experience begins with the first couple of pedal strokes. It feels so smooth and comfortable that you might actually think you're airborne. The powerful ST2 is a true athlete. With one of the strongest batteries in the e-bike world, you can easily cover longer distances between home and work – without even having to recharge once.

Hop onto the first digitally connected e-bike and let the technology do the work. Service information and anti-theft protection are fully integrated into all ST2 models.

On the sporty ST2 you won't just turn the heads of other e-bike riders with your elegance and dynamic athleticism, you'll also cut a good figure alongside car drivers.

Experience the unparalleled performance of the ST2.



## DESIGN

Less is more – one look at a Stromer e-bike with its sleek, clear-cut design confirms this principle. The U-shaped daytime running light is integrated into the head tube and ensures that you are visible to oncoming traffic. The fact that the cables are neatly stowed inside the frame rounds off the bike's clean look. But good design also always facilitates perfect functionality. This is why the ST2 models rank among the top of their kind – especially when considering clever details in terms of safety, usability, and comfort. The features that catch your eye at first glance will continue to fascinate you at second and third glance.



## RANGE

The powerful battery allows you to spend the day out and about on your ST2 e-bike without having to worry about recharging. This Stromer takes you to new heights in terms of range. Depending on which battery you choose for your e-bike, you can cover up to 110 mi before the battery's energy is used up. And recharging couldn't be simpler: just use the external charging socket or plug the battery together with the charger into any conventional power socket. The combination of an intelligently configured motor and a strong battery ensure the best possible energy efficiency.



## POWER

Thanks to the ST2's powerful 500W drive unit, your uphill acceleration is even more dynamic, and you won't bat an eyelid when facing steep inclines. Powered by a compact, low-maintenance SYNO Drive motor, the ST2 delivers top performance. The amount of manual pedaling you want to do is entirely up to you. You choose from three pedal assist modes that can be selected anytime via the control element next to the handle grip. With a top speed of 28 mph, your Stromer gets you to work fast, while your colleagues are still stuck in traffic.

## CONNECTIVITY

The ST2 models are the first electric bikes that are connected with the digital world. Thanks to the mobile phone network and GPS, you can access the performance data and settings of your Stromer at any time on your smartphone. And because the data is accessible to dealers, you can rest assured that your e-bike is getting the best possible service and that it is always in premium condition. The ST2 is a bona fide communications expert that also offers anti-theft protection and a tracking function via the cloud-based Omni platform.



**FRAME COLOR**



# ST2 S

The ST2 S is the crème de la crème of electric bikes. With its dynamic 500 W SYNO Drive motor and 983 Wh battery, you will experience the Stromer's power every time you push the pedals. Even the first few meters will already make you feel like you're about to lift off. Not to mention the great fun you'll have racing round corners and zipping along at high speeds on your sophisticated grey ST2 S.

The ST2 S is available with a 17, 20 or 22-inch sport frame and offers maximum ease of gear changing. The 11 gears of the Shimano XTR Di2 electronic shifting can be precisely selected at the push of a button – quickly, dynamically and without lever force.



The Continental Top Contact tires ensure a safe and comfortable ride. They absorb all kinds of shocks and vibrations without forfeiting driving enjoyment, since they do not compromise on rolling resistance despite the safety they afford. The four-piston Magura braking system, adapted from car racing and optimized for the ST2 S, allows controlled, safe braking even at high speeds.



Safety also means excellent visibility, regardless of road and weather conditions. For this reason we integrated an interactive brake light, and an intelligent Supernova LED matrix headlight into the design. Activate the low or high beam mode with up to 1,600 lumens for excellent visibility in all kinds of weather.



## FRAME COLORS



# ST2

The ST2 is available in Sport and Comfort versions. In the Sport version, you have a choice of a 17, 20 or 22-inch frame. The Comfort version with its 17-inch frame has a lower top tube for ease of climbing on and off. Both versions are equipped with 20-speed Shimano drivetrains.

The ST2 is available in high-gloss white or matte black, and is fitted with a rugged City Kit tailored specially to the requirements of Stromer riders. In addition, the specially adapted Supernova headlight and efficient rear light will ensure other road users will spot you as you ride along in style.

**FRAME COLORS****MOTOR**

The SYNO Drive motor is a brushless, direct current motor integrated into the rear hub. Because industrial-grade ball bearings are the only mechanical contact, the system is incredibly quiet, extremely efficient, and requires hardly any maintenance. You won't bat an eyelid when faced with steep inclines – the 500 W motor with a torque of 40 Nm will power you up them with ease.

**CARBON FORK**

The ST2's carbon fork also unites safety and comfort. The high-quality material is both extremely light and very stable. The fork effortlessly absorbs impact and vibrations, making even the bumpiest of roads comfortable to ride along.

**BATTERY**

Hidden discreetly in the down tube, the power pack with lithium-ion cells has a capacity of up to 814 Wh, enough for a range of up to 90 mi. To charge the battery, you can either use the charging socket integrated into the bike, or you can quickly remove the battery and plug it into any conventional power socket together with the charger.

**TIRES**

Perfect tires are crucial to both driving safety and comfort, which is why Stromer commissioned special Schwalbe tires for the ST2. You can look forward to exceptionally good shock absorption, outstanding grip, and integrated puncture protection.







**ST1**





## THE SUPERLATIVE WAY TO COMMUTE

The ST1 line is the opening category among our premium electric bikes and leaves nothing to be desired in terms of both form and function.

Clever technical details, such as the stepless acceleration of the motor, guarantee a dynamic driving style. You'll cut a fine figure all year round on your ST1.

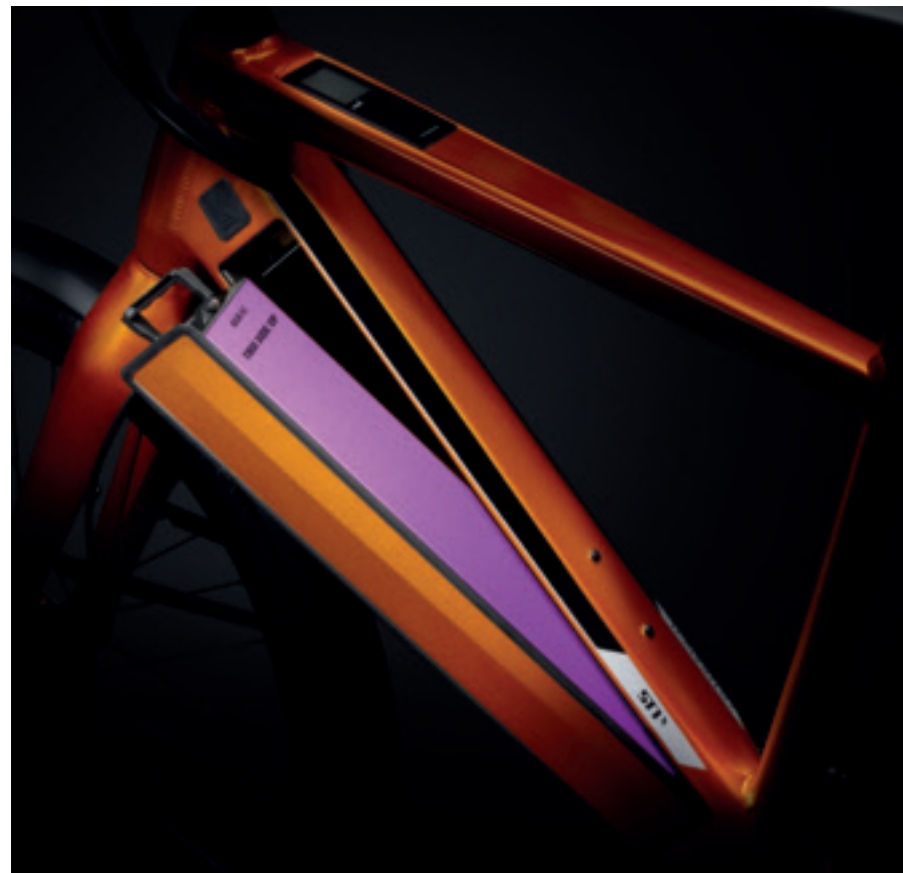
We have developed the ST1 further and brought out a new, attractive Stromer: the ST1 X. The "X" stands for "crossing" in the sense that the technology and design of the top-level ST2 line are crossing over into the ST1 family. Some of the special features are the connectivity including our very own app and the integrated anti-theft protection. But we have also taken the power, range and design of our new Stromer to the next level.

As the owner of a Stromer e-bike, you use electricity instead of oil, thus helping to protect the environment. With Stromer, you save time and money, avoid stress, and improve your quality of life.



## DESIGN

The ST1 line is a masterpiece of clean design into which proven technology is cleverly integrated. The battery, for instance, is inside the down tube, the motor in the rear hub, and the cables inside the frame. The form and function of the saddle, fenders, and luggage rack are specifically matched to the design of the ST1. While the classic black of the ST1 exudes timeless elegance, the bold orange color of the ST1X adds freshness to the line.



## RANGE

Your ST1 can easily cover short and medium distances. The power pack ingeniously integrated into the frame comes with lithium-ion cells, and charging it is a piece of cake. You can either charge the battery directly in the e-bike, or externally at any conventional power socket in the office or at home. What's more, the ST1 generates energy from the braking process itself and automatically feeds it back into the battery.



## POWER

The ST1's motor runs quietly and efficiently, and the powerful torque produces a strong acceleration. You will be off the moment the traffic lights turn green, leaving the cars behind you. Specific algorithms developed by Stromer ensure an optimal driving experience. How much pedal work you do on your e-bike is entirely up to you. You can switch between the multiple pedal assist modes directly on the handlebar at any time.



## CONNECTIVITY

Stromer has taken the ST1 one step further and brought out its big brother, the ST1 X. As a new feature, this model has all the benefits of the digital world and can connect with the Omni portal and your smartphone. In addition to optimized settings and service information, the new member of the ST1 family also boasts integrated anti-theft protection and a tracking option.



## FRAME COLORS



# ST1 X

The ST1 X is the newest member of the Stromer family. Its elegant finish hints at its design and technological innovations. In addition to the clean white and charcoal finishes, you can also choose a fresh shade of orange for your ST1 X. Apart from that, two different frame styles are available. The Comfort with its 17-inch frame offers great ease of mounting and dismounting, even when you're wearing elegant clothing. The Sport comes with a 17, 20 or 22-inch frame, depending on your height.

The ST1 X doesn't need to be charged as often as the ST1. The 618 Wh battery, which is hidden in the down tube, can cover a distance of up to 70 mi. If you decide to take the stronger 814 Wh battery, you can ride up to 90 mi. Powered by a 500 W Cyro Drive motor with 35 Nm torque, it takes hardly any effort at all to drive off on your e-bike. Enjoy the exhilarating feeling of urban mobility at up to 28 mph.

**FRAME COLORS**

The Shimano SLX 11 speed drivetrain and the Schwalbe Big Ben Puncture Guard tires guarantee a dynamic ride. The Tektro Dorado brakes ensure that you can brake safely in all weather conditions.

The ST1 X can also connect to Stromer's tried-and-tested Omni app, which includes anti-theft protection and a tracking option. The frame houses the touch display that allows you to easily operate all of the bike's important functions and settings. Pedestrians won't hear you approaching on your Stromer ST1 X, but you'll get their admiring looks as you silently glide past them.



**FRAME COLOR**



# ST1

The ST1 is an e-bike with attractive features. If you are looking for excellent quality and design in your first e-bike, then this Stromer is for you. If your main interest is to be able to get on and off your bike easily, the Comfort model with its low top tube will be best suited to you. This model comes with a 17-inch frame. In the Sport version, you can choose between a 17 and a 20-inch frame, depending on your height. The ST1 offers a choice of two speed options. Powered by a 500 W

motor, the potent Platinum version accelerates effortlessly from 0 to 28 mph. The Elite version can reach a maximum speed of 20 mph, giving you a relaxing ride to your destination. Both versions have four pedal assist modes to choose from, depending on how much pedaling you want to do.

**FRAME COLOR**

The lithium-ion battery hidden in the down tube can be removed in an instant for ease of recharging. It delivers 522 Wh of power and a range of up to 55 mi. If you choose the larger capacity battery for your Stromer, it will carry you 10 mi further. The classic black finish rounds off the ST1's clean look. The Schwalbe Big Ben tires handle exceptionally well, and Tektro Dorado brakes ensure a short stopping distance.

The Busch+Müller lighting system guarantees excellent visibility, and the handy luggage rack allows you to carry small and large items safely and securely. The user-friendly Stromer display is mounted on the handlebar. It allows you to call up important data such as the current battery status and distance covered. You can also set the driving characteristics at the push of a button, allowing you to instantly switch pedal assist modes to suit the road conditions and surfaces.





omni



## ST2 S

omni



## ST2

<b>FRAME COLORS</b>	■	□ ■	
<b>FORK</b>	Stromer ST2 carbon fork	Stromer ST2 carbon fork	
<b>BRAKES</b>	Magura MT Next e / MT5	Magura MT Next e / MT4	
<b>DRIVETRAIN</b>	Shimano XTR Di2   11-speed	Shimano XT   20-speed	
<b>CRANK</b>	FSA   52T	FSA 52X36T	
<b>REAR COGS</b>	Shimano 11-40T	Shimano 11-34T	
<b>HEADLIGHT</b>	Supernova M99 Pro	Stromer custom Supernova	
<b>REAR LIGHT</b>	Supernova M99 Taillight	Busch+Müller Toplight Mini	
<b>DAYTIME RUNNING LIGHT</b>	Integrated Stromer daytime running light	Integrated Stromer daytime running light	
<b>FENDERS</b>	Stromer custom aluminium	Stromer custom aluminium	
<b>CARRIERS</b>	-	Stromer custom Racktime	
<b>TIRES</b>	Continental Top Contact II   26x2.0	Stromer Schwalbe Big Ben Green Guard   26x2.15	
<b>SADDLE</b>	fi'zik Aliante R5	Stromer custom   Sport/Comfort	
<b>CONNECTIVITY</b>	yes – synchronize with omni portal & app	yes – synchronize with omni portal & app	
<b>MOTOR</b>	SYNO Drive	SYNO Drive	
SUPPORTED SPEED	up to 28 mph	up to 28 mph	
OUTPUT	500 W	500 W	
TORQUE	40 Nm	40 Nm	
RANGE	40-110 mi	30-90 mi	40-110 mi
<b>BATTERY</b>	BQ983	BQ814	BQ983 (optional)
ENERGY	983 Wh	814 Wh	983 Wh
VOLTAGE	48 V	48 V	48 V
WEIGHT	11 lbs	10.2 lbs	11 lbs
<b>FRAME SIZE</b>	<178 cm = Sport 17" 175-188 cm = Sport 20" >185 cm = Sport 22"	<178 cm = Comfort 17" 175-188 cm = Sport 20" >185 cm = Sport 22"	<178 cm = Sport 17" 175-188 cm = Sport 20" >185 cm = Sport 22"



omni

## ST1 X



## ST1 PLATINUM



## ST1 ELITE



Stromer ST1 X aluminium fork		Stromer ST1 carbon fork		Stromer ST1 carbon fork	
Tektro Dorado		Tektro Dorado		Tektro Dorado	
Shimano SLX   11-speed		Shimano   27-speed		Shimano   9-speed	
FSA   52T		50x39x30T		42T Single	
Shimano 11-42T		11-32T		11-32T	
Roxim X4 EP		Busch+Müller Lumotec IQ Fly		Busch+Müller Lumotec IQ Fly	
Busch+Müller Toplight Mini		Busch+Müller Toplight Mini		Busch+Müller Toplight Mini	
-		-		-	
Stromer custom aluminium		Stromer custom aluminium		Stromer custom aluminium	
Stromer custom Racktime		Stromer custom Racktime		Stromer custom Racktime	
Schwalbe BigBen Puncture Guard   26x2.15		Schwalbe BigBen Puncture Guard   26x2.15		Schwalbe BigBen Puncture Guard   26x2.15	
Stromer custom   Sport/Comfort		Stromer custom Comfort		Stromer custom Comfort	
yes – synchronize with omni portal & app		-		-	
CYRO Drive		POWER 48		MOUNTAIN 33	
up to 28 mph		up to 28 mph		up to 20 mph	
500 W		500 W		500 W	
35 Nm		30 Nm		30 Nm	
25-75 mi	30-90 mi	25-50 mi	25-65 mi	25-50 mi	25-65 mi
BQ618	BQ814 (optional)	B0522	B0630 (optional)	B0522	B0630 (optional)
618 Wh	814 Wh	522 Wh	630 Wh	522 Wh	630 Wh
48 V	48 V	36 V	36 V	36 V	36 V
9.25 lbs	10.2 lbs	6.6 lbs	7 lbs	6.6 lbs	7 lbs

<178 cm = Comfort 17"	<178 cm = Sport 17"	<178 cm = Comfort 17"	<178 cm = Sport 17"	<178 cm = Comfort 17"	<178 cm = Sport 17"
	175-188 cm = Sport 20"		>175 cm = Sport 20"		>175 cm = Sport 20"
	>185 cm = Sport 22"				



## DRIVEN BY A PIONEERING SPIRIT

There are some projects that show that they care about the environment, while others show technical progress, and still others show us the appeal of a certain lifestyle. But there are also projects that combine all of these things. Stromer has been involved in one of these innovative projects, showing that pioneering spirit also means looking beyond the horizon.

Welcome to the landing strip – this is where Solar Impulse, an enormous high-tech aircraft, began and ended its trip around the world. It is the size of a jumbo jet, yet as light as your car, and it circumnavigated the globe without using a drop of fuel, on solar power alone.

Solar Impulse is going down in history as a zero emission pioneer – and Stromer is right in the middle of it. At takeoff and touchdown the lightweight construction needed the support of two e-bikes to stabilize its wings in the critical phase. Stromer specially adapted an e-bike to reach the 40 mph speed required for this purpose.

In this way Stromer has made an inspiring contribution to the mobility of tomorrow. Stromer was involved in Solar Impulse's 15 successful takeoffs and 15 safe landings on its round-the-world trip. The important message that this adventure impressed upon the world: zero-emission mobility is the future.

# SOLARIMPULSE

AROUND THE WORLD IN A SOLAR AIRPLANE

# CORPORATE SOLUTIONS

As a specialist for e-bike commuting, we can offer you customized solutions for your company. A Stromer vehicle fleet will contribute greatly to your employees' wellbeing as well as reducing your company's CO2 footprint.

Our prize-winning e-bikes are the perfect alternative for your daily commute, and for getting to business meetings or running errands in the vicinity. Plus, the endless search for a parking space is a thing of the past.

We would be happy to bring a Stromer fleet to your company for you to get a first-hand impression of the qualities of our e-bikes. We can assist you with branding and can help you, through our dealers or with the help of our very own configuration tool, to configure and order your ideal Stromer.

Many companies have already recognized the advantages of modern mobility.

## EMMI

In 2014 Emmi, Switzerland's largest milk processor, teamed up with Stromer to launch a large-scale initiative giving Emmi employees the opportunity to purchase Stromer ST1 e-bikes at special conditions. "Our employees were very excited. We had a number of requests to repeat the campaign," says Emmi top manager Max Peter, who also values the Stromer e-bikes in his company's own vehicle fleet. "On weekdays they are used for courier journeys. On weekends they are available for our employees' personal use. But it's important to reserve them well in time, as the e-bikes are in high demand!"

For more information, go to [stromerbike.com](http://stromerbike.com), and write to [infousa@stromerbike.com](mailto:infousa@stromerbike.com) to request your own personal Stromer e-bike package.



Contact:

**myStromer USA Corp.** | 9240 Trade Place Suite 100 | San Diego CA 92126 | [stromerbike.com](http://stromerbike.com) | [infousa@stromerbike.com](mailto:infousa@stromerbike.com)

**Photo credits** | Products: **Andrea Campiche** | Outdoor: **Florian Grill**

© **myStromer AG** | This catalog is without commitment. Due to continuous product improvement, features and specifications are subject to change without notice. Some of the equipment described or shown may only be available in certain countries or may be available only at extra costs.